

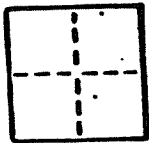
# CORNER RECORD

1 OF 2

COUNTY OF MARIN T. \_\_\_\_\_ E. \_\_\_\_\_ MERIDIAN \_\_\_\_\_ CALIFORNIA

CORNER TYPE: GOVT. CORNER  MEANORS  RANCHO  CONTROL  OTHER

A.P. # 59-143-31, 32



CORNER - LEFT AS FOUND  FOUND AND TAGGED  REESTABLISHED OBLITERATED CORNER  RESULT

PHYSICAL DESCRIPTION OF CORNER FOUND; EVIDENCE AND METHOD USED TO IDENTIFY OR REESTABLISH

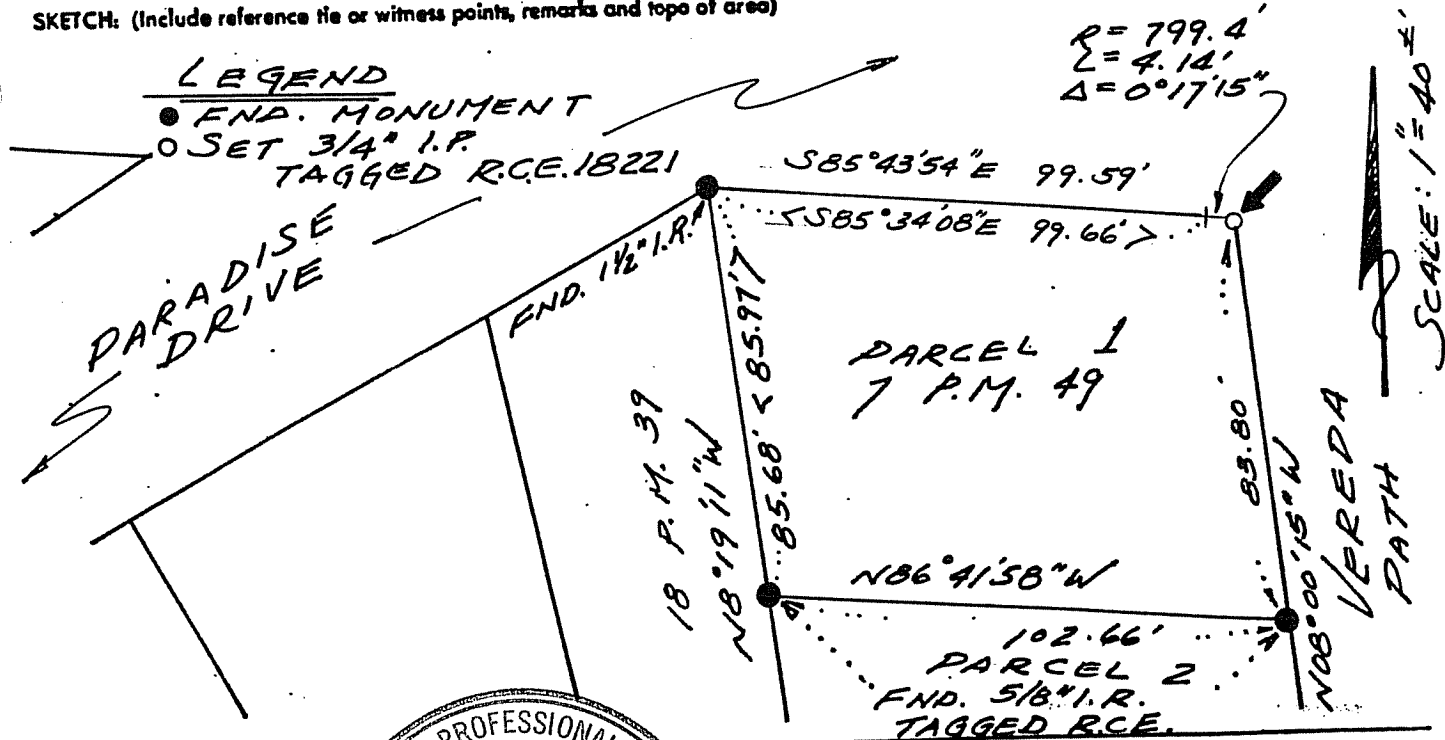
A.P. 59-143-31 & 32

PHYSICAL DESCRIPTION OF MONUMENTS RESULT OR PERPETUATED

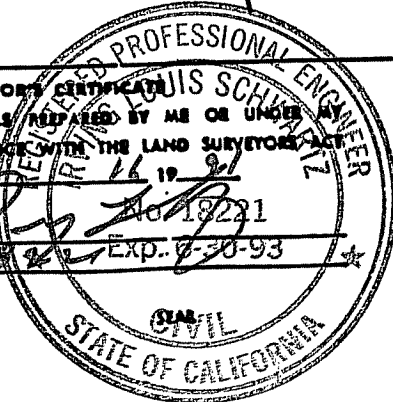
SET 3/4" IRON PIPE W/ TAG R.C.E. 18221,  
FOR THE NORTHEAST CORNER OF PARCEL 1,  
7 P.M. 49, TIBURON.

CALIFORNIA COORDINATE SYSTEM ORDER: FIRST  SECOND  THIRD   
STATIONS USED: NGS (USC & GS)  STATE  COUNTY  OTHER  STATION \_\_\_\_\_ STATION \_\_\_\_\_  
ZONE \_\_\_\_\_ ELEVATION \_\_\_\_\_ NORTHINGS (N) \_\_\_\_\_ EASTINGS (E) \_\_\_\_\_

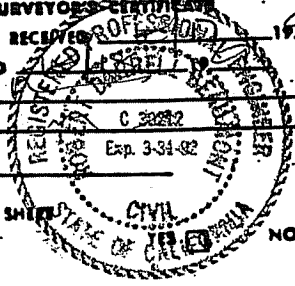
SKETCH: (Include reference tie or witness points, remarks and topo of area)



SURVEYOR'S CERTIFICATE  
THIS CORNER RECORD WAS RECEIVED BY ME OR UNDER MY DIRECTION IN CONFORMANCE WITH THE LAND SURVEYORS ACT ON OCTOBER 16 19 91  
SIGNED: [Signature] No. 18221 Exp. 7-30-93  
L.S. or R.C.E. No. 18221



COUNTY SURVEYORS CERTIFICATE  
THE CORNER RECORD WAS RECEIVED BY ME OR UNDER MY DIRECTION AND EXAMINED AND FILED IN THE OFFICE OF THE COUNTY SURVEYOR ON OCTOBER 16 19 91  
BY: [Signature]  
TITLE: C 20282  
DOCUMENT No. \_\_\_\_\_  
STATEMENT ON BACK OF SHEET  NO



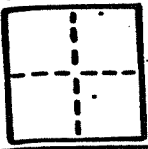
# CORNER RECORD

2022

COUNTY OF MARIN T. \_\_\_\_\_ R. \_\_\_\_\_ MERIDIAN \_\_\_\_\_ CALIFORNIA

CORNER TYPE: GOVT. CORNER  MEANDER  RANCHO  CONTROL  OTHER

CORNER IDENTIFICATION - DATE OF VISIT \_\_\_\_\_ 19\_\_\_\_



CORNER - LEFT AS FOUND  FOUND AND TAGGED  REESTABLISHED OBLITERATED CORNER  RESULT

PHYSICAL DESCRIPTION OF CORNER FOUND; EVIDENCE AND METHOD USED TO IDENTIFY OR REESTABLISH

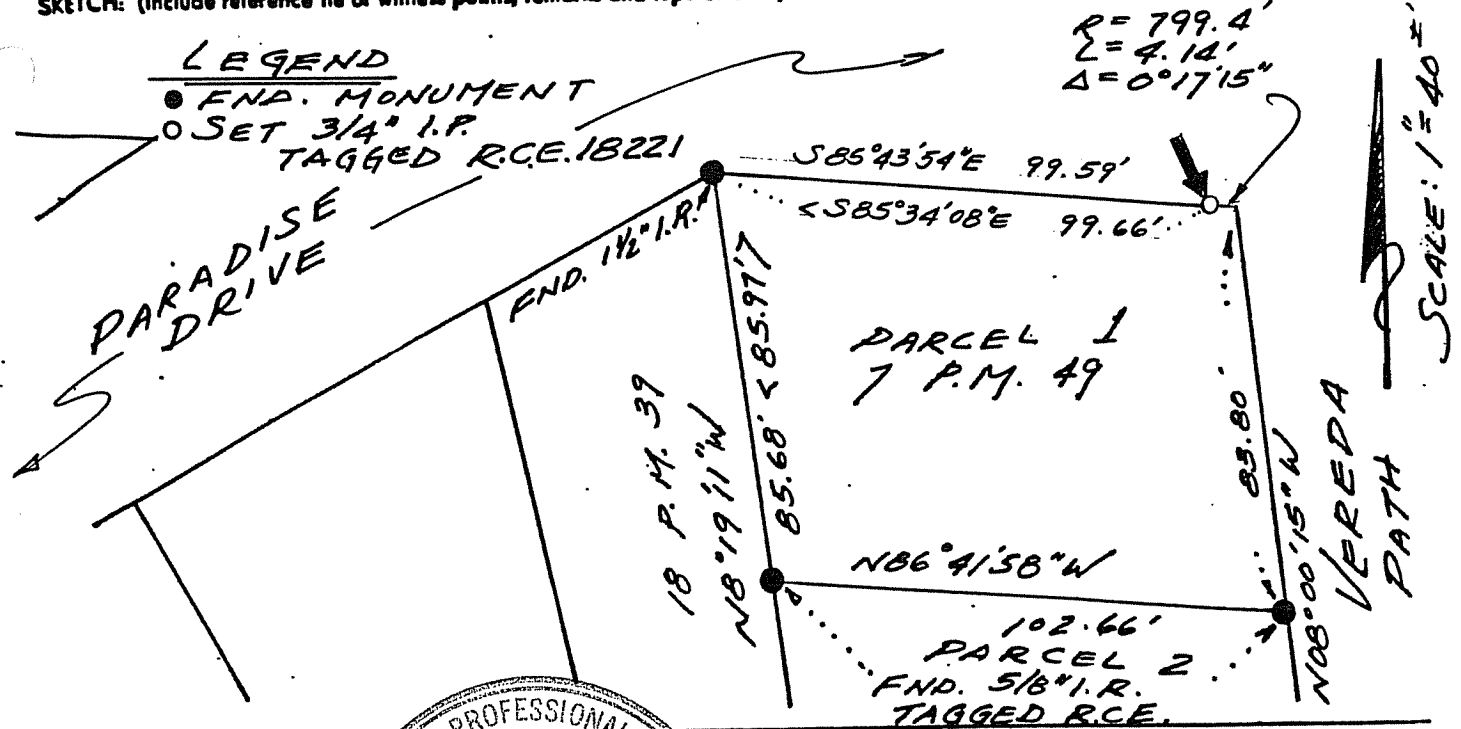
A.P. 59-143-31 & 32

PHYSICAL DESCRIPTION OF MONUMENTS RESULT OR PERPETUATED

SET 3/4" IRON PIPE W/ TAG R.C.E. 18221,  
FOR THE NORTHWESTERLY POINT OF CURVATURE  
ON PARADISE DRIVE, PARCEL 1, 7 P.M. 49, TIBURON.

CALIFORNIA COORDINATE SYSTEM ORDER: FIRST  SECOND  THIRD   
STATIONS USED: NGS (USC & GS)  STATE  COUNTY  OTHER  STATION \_\_\_\_\_ STATION \_\_\_\_\_  
ZONE \_\_\_\_\_ ELEVATION \_\_\_\_\_ NORTHINGS (N) \_\_\_\_\_ EASTINGS (E) \_\_\_\_\_

SKETCH: (Include reference tie or witness points, remarks and topo of area)



**SURVEYOR'S CERTIFICATE**  
THIS CORNER RECORD WAS PREPARED BY ME OR UNDER MY DIRECTION IN CONFORMANCE WITH THE LAND SURVEYORS ACT ON OCTOBER 19 1991  
SIGNED: [Signature] No. 18221  
L.S. or R.C.E. No. 18221 EXP. 3-30-93  
STATE OF CALIFORNIA  
PROFESSIONAL ENGINEER  
CIVIL

**COUNTY SURVEYOR'S CERTIFICATE**  
THE CORNER RECORD WAS RECEIVED, EXAMINED, AND FILED BY \_\_\_\_\_ ON \_\_\_\_\_ 1991  
TITLE: \_\_\_\_\_  
DOCUMENT No. \_\_\_\_\_  
STATEMENT ON BACK OF \_\_\_\_\_  
COUNTY SURVEYOR'S OFFICE  
STATE OF CALIFORNIA